

Sustainable Restaurants
Association & UKH
sector council

Biodiversity quarterly
working group

1.02.2024

@GFMcoalition
globalfarmmetric.org
info@globalfarmmetric.org



Challenges in food and farming



Environmental, social and economic uncertainty



Siloed approach to sustainability



Inconsistent



Top down



Focus on farm practices

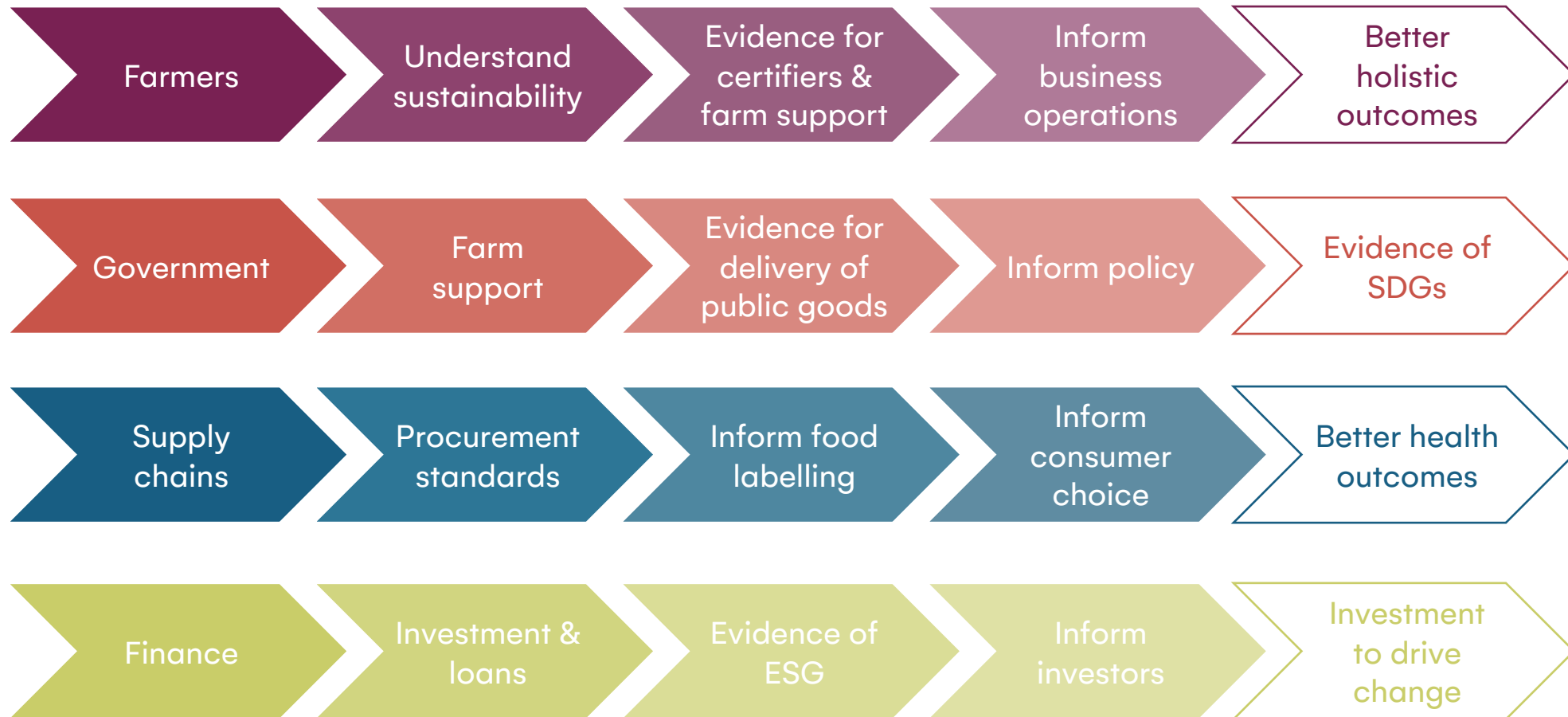
The Global Farm Metric



-  Holistic
-  Common language
-  Farmer led
-  Outcomes based
-  Inclusive
-  Evidence based & evolving
-  On-farm data
-  Drives change



Driving change



Example: Nature category



Category aim: Diverse, healthy ecosystems support the long-term sustainability of farming.

Subcategories and indicators:

- Farm biodiversity
 - Health of farm biodiversity
- Farm Habitats
 - Quality of land for farming
 - Farm habitat health
- Environmental hazards
 - Level of air pollution
 - Level of soil pollution
 - Level of water pollution



Applications and trials



Farmer, stakeholder, supply chain and international trials — testing the framework via a research tool.

There are many applications of the framework — including policy, knowledge building, communications



“

Over 70% of farmers had a wider and more nuanced definition of sustainability.

80% of farmers had reconsidered the sustainability of their own farm. 60% viewed this as more critical than before the trial.

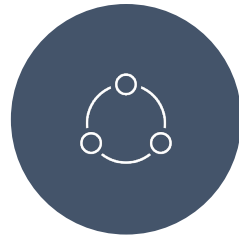
71% had a better understanding of the positive relationship between sustainability and their farm business.

”

Why is this relevant for hospitality?



SOURCING &
STORY TELLING



HOLISTIC
POLICIES



NEW BUILDING
LAWS



UNDERSTANDING
IMPACTS



A COMMON
LANGUAGE

How to get involved



QUARTERLY NEWSLETTER
UPDATES



EMAIL:
INFO@GLOBALFARMMETRIC.ORG